



1750 Ton Press located in Humble, TX

“FCI” THE NOZZLE EXPERTS
 Custom Forging & Machining Services
 dedicated to ASME and API products since
 1997 with 6 manufacturing facilities on
 50 acres, and over 200,000 sq. feet under roof.

FCI™ FORGED COMPONENTS INC. **24/7**

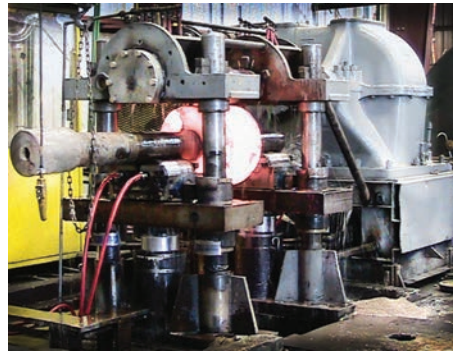
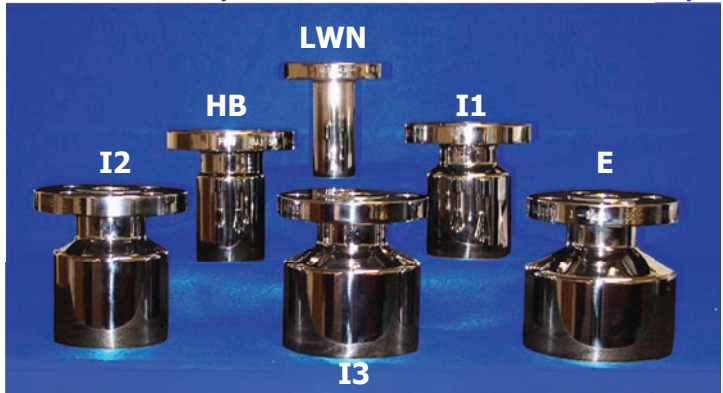
www.forgedcomponents.com
 sales@forgedcomponents.com
 281-441-4088

FORGED CONNECTIONS FOR PRESSURE VESSELS

- Long Weld Necks Connections _____LWN
- Heavy Barrel Connections _____HB
- Intermediate Barrel Connections _____I1, I2, I3
- Equal Barrel Connections _____E
- Super Barrel Connections _____SB
- Insert Lip Connections _____Q

ROUGH FORGINGS, CUSTOM PRODUCTS,
 LARGE DIAMETER FLANGES, STUDDING OUTLETS,
 AND BUTTWELD STUB END CONNECTIONS

“FCI” Pressure Vessel Connections are available in
 carbon steel, alloy steel, stainless steel and nickel alloys



Forged Components Inc. Corporate Office located at 14527 Smith Road , Humble TX. 77396
 Inquires: Sales@forgedcomponents.com
 Customer Service: (281) 441-4088, Fax: (281) 441-8899 / Canada Sales Office: (780) 905-6180 , Fax: (780) 462-7451

Forged Components, Inc. specializes in the forging and machining of ASME self-reinforced pressure vessel connections, API Wellhead products, and flanges. The experience, array of tooling, and equipment within the company promotes custom forged products, machining, and other services as listed below. FCI's forging and manufacturing capabilities are not limited to the products and/or the material grades as listed. Other forged shapes and complimentary services are provided on a regular basis.

Forged shapes can be provided in either the finished machined condition or forged and proof machined for finishing by others.

FORGED CONNECTIONS FOR PRESSURE VESSELS

- Long Weld Necks Connections _____ LWN
- Heavy Barrel Connections _____ HB
- Intermediate Barrel Connections _____ I₁, I₂, I₃
- Equal Barrel Connections _____ E
- Super Barrel Connections _____ SB
- Insert Lip Connections (Saddle Type) _____ Q
- Butt Weld Stub Weld Connections
- Studding Outlets (Any Connections)
- Large Diameter Flanges ASME B16.47 Series A & B
- Tangential / Hillside Mount Connections

CUSTOM FORGED PRODUCTS

- Extended Barrel Connections
- Rail Car Manway Studding Outlets
- Specialty Flow Nozzles
- Cylinder and Ring Forgings
- Mandrel Rings and Discs
- High Pressure Manifold Bodies
- Large Diameter Valve Seal Rings
- Contour Radius up to 77" OD – Nozzles
- Open-Die Forgings up to 35,000 Lbs
- Bar Products
- API Flanges and Blinds
- Wellheads, Casing Heads and Tubing Heads
- Tree Cap Body Forgings
- Valve Body Bonnets
- Spools and Adapters- Drilling Spools and DSA's
- Casing Spools and Tubing Head Adapters
- High Pressure Valve Bodies
- Square and Rectangular Blocks
- Forged Disks up to 95" OD
- Elbows & Tees

SERVICES AND JOINT VENTURE FORGED PRODUCTS

- Machining Capacity to 144" Diameter
- Extruded Headers
- Insert (Saddle Type) Branch Connections (Piping Sizes)
- Forged Cylinders up to 160" Length
- Swage Die Forged Bars to 22" OD x 24 ft Long
- Closed Die Forged Components
- Reverse Knuckle Cones
- Forged Flanges to 14 ft Diameter
- Bucket Teeth and other Mining Components
- Gear and Crankshafts
- Open-Die Forging up to 45,000 Lbs
- Overlay

MATERIAL

- SA105, SA266, SA336, SA350, SA541, SA182, SB564
- Low Alloy Steels, Ferritic – Austenitic Stainless, Martensitic Stainless, Duplex Stainless & Nickel Alloys
- A694, A707, A350LF2
- F1, F5, F6, F6NM, F9, F11, F22, F51, F60, F91
- AISI 1029, 1040, 4130, 4140, 4340, 8630
- API 36k, 45k, 60k, 75k, (NACE), 110k, (4140)

FCI's Quality Manual utilizes ASME, API Spec Q1 and the ISO 9000 Program Guidelines in its system to continually monitor the manufacturing processes. FCI connections are manufactured in compliance with ASME section VIII, Div. 1 and ASME B16.5. Products may be ordered to special requirements or other standard codes such as ASME section I and II and Section VIII, Div.2, ASME B 16.47 Series A & B, API and ASTM.



"FCI" The Nozzle Experts
Celebrating it's Nineteenth Year Anniversary 1997 - 2016

24 HOURS / 7 DAYS A WEEK SERVICE