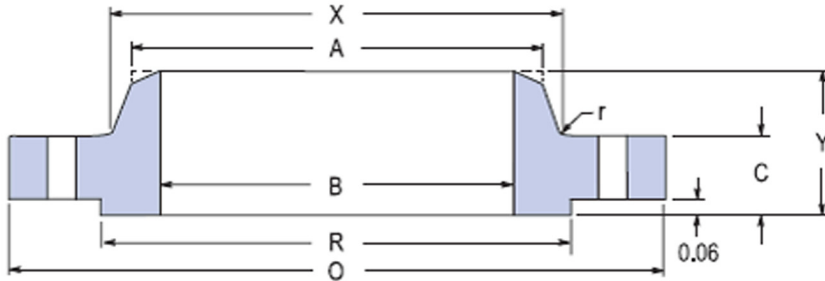
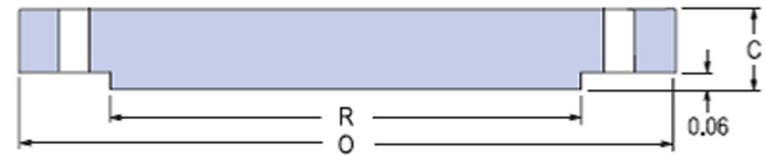


Class 150 - Large Diameter Flanges ASME B16.47 Series A or MSS SP-44



WELDING NECK



BLIND

Nominal Pipe Size	Flange								Bolting				Weights	
	OD	Thickness		Raised Face OD	Fillet Radius Min.	Hub			No. of Holes	Hole Size	Bolt Circle Dia.	Stud Bolt Diameter	Weld Neck Flange	Blind
		WN Flg	Blind			Length	Bottom OD	Top OD						
O	C	C	R	r	Y	X	A							
class 150 LARGE DIAMETER FLANGES ASME B16.47 Series A or MSS SP- 44														
26	34.25	2.69	2.69	29.50	0.38	4.75	26.62	26.00	24	1.38	31.75	1 1/4	300	670
28	36.50	2.81	2.81	31.50	0.44	4.94	28.62	28.00	28	1.38	34.00	1 1/4	345	795
30	38.75	2.94	2.94	33.75	0.44	5.38	30.75	30.00	28	1.38	36.00	1 1/4	400	940
32	41.75	3.19	3.19	36.00	0.44	5.69	32.75	32.00	28	1.62	38.50	1 1/2	505	1175
34	43.75	3.25	3.25	38.00	0.50	5.88	34.75	34.00	32	1.62	40.50	1 1/2	540	1315
36	46.00	3.56	3.56	40.25	0.50	6.19	36.75	36.00	32	1.62	42.75	1 1/2	640	1590
38	48.75	3.44	3.44	42.25	0.50	6.19	39.00	38.00	32	1.62	45.25	1 1/2	720	1740
40	50.75	3.56	3.56	44.25	0.50	6.44	41.00	40.00	36	1.62	47.25	1 1/2	775	1955
42	53.00	3.81	3.81	47.00	0.50	6.75	43.00	42.00	36	1.62	49.50	1 1/2	890	2290
44	55.25	4.00	4.00	49.00	0.50	7.00	45.00	44.00	40	1.62	51.75	1 1/2	990	2790
46	57.25	4.06	4.06	51.00	0.50	7.31	47.12	46.00	40	1.62	53.75	1 1/2	1060	3050
48	59.50	4.25	4.25	53.50	0.50	7.56	49.12	48.00	44	1.62	56.00	1 1/2	1185	3220
50	61.75	4.38	4.38	55.50	0.50	8.00	51.25	50.00	44	1.88	58.25	1 3/4	1270	3545