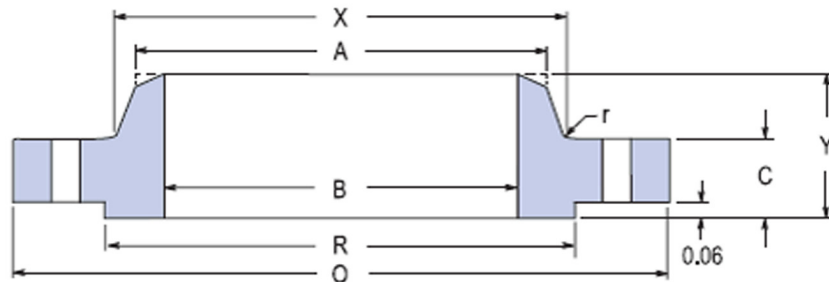
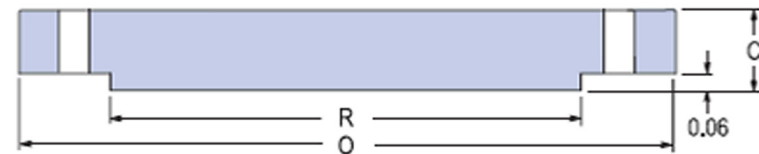


## Class 300 - Large Diameter Flanges ASME B16.47 Series A or MSS SP-44



WELDING NECK



BLIND

Nominal Pipe Size	Flange								Bolting				Weights	
	OD	Thickness		Raised Face OD	Fillet Radius Min.	Hub			No. of Holes	Hole Size	Bolt Circle Dia.	Stud Bolt Diameter	Weld Neck Flange	Blind
		WN Flg	Blind			Length	Bottom OD	Top OD						
O	C	C	R	r	Y	X	A							
<b>class 300 LARGE DIAMETER FLANGES ASME B16.47 Series A or MSS SP- 44</b>														
26	38.25	3.12	3.31	29.50	0.38	7.25	28.38	26.00	28	1.75	34.50	1 5/8	605	1010
28	40.75	3.38	3.56	31.50	0.44	7.75	30.50	28.00	28	1.75	37.00	1 5/8	745	1240
30	43.00	3.62	3.75	33.75	0.44	8.25	32.56	30.00	28	1.88	39.25	1 3/4	870	1450
32	45.25	3.88	3.94	36.00	0.44	8.75	34.69	32.00	28	2.00	41.50	1 7/8	1005	1685
34	47.50	4.00	4.12	38.00	0.50	9.12	36.88	34.00	28	2.00	43.50	1 7/8	1145	1915
36	50.00	4.12	4.38	40.25	0.50	9.50	39.00	36.00	32	2.12	46.00	2	1275	2280
38	46.00	4.25	4.25	40.50	0.50	7.12	39.12	38.00	32	1.62	43.00	1 1/2	695	1910
40	48.75	4.50	4.50	42.75	0.50	7.62	41.25	40.00	32	1.75	45.50	1 5/8	840	2270
42	50.75	4.69	4.69	44.75	0.50	7.88	43.25	42.00	32	1.75	47.50	1 5/8	950	2570
44	53.25	4.88	4.88	47.00	0.50	8.12	45.25	44.00	32	1.88	49.75	1 3/4	1055	2940
46	55.75	5.06	5.06	49.00	0.50	8.50	47.38	46.00	28	2.00	52.00	1 7/8	1235	3370
48	57.75	5.25	5.25	51.25	0.50	8.81	49.38	48.00	32	2.00	54.00	1 7/8	1380	3740
50	60.25	5.50	5.50	53.50	0.50	9.12	51.38	50.00	32	2.12	56.25	2	1530	4270
52	62.25	5.69	5.69	55.50	0.50	9.38	53.38	52.00	32	2.12	58.25	2	1660	4715
54	65.25	6.00	6.00	57.75	0.50	9.94	55.50	54.00	28	2.38	61.00	2 1/4	2050	5460
56	67.25	6.06	6.06	59.75	0.50	10.25	57.62	56.00	28	2.38	63.00	2 1/4	2155	5870
58	69.25	6.25	6.25	62.00	0.50	10.50	59.62	58.00	32	2.38	65.00	2 1/4	2270	6400
60	71.25	6.44	6.44	64.00	0.50	10.75	61.62	60.00	32	2.38	67.00	2 1/4	2470	7000