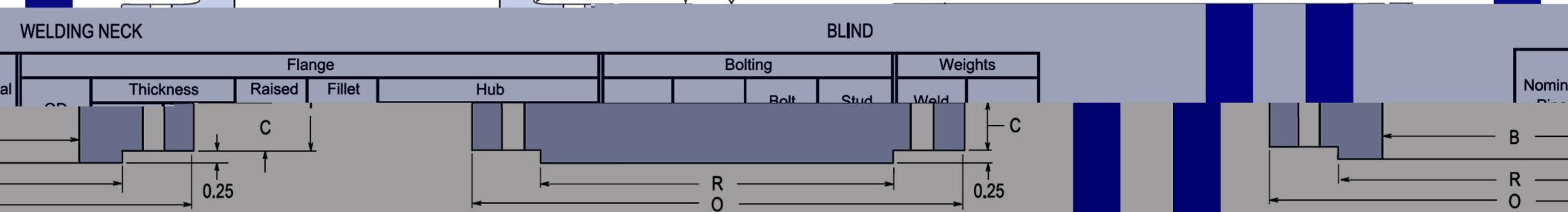
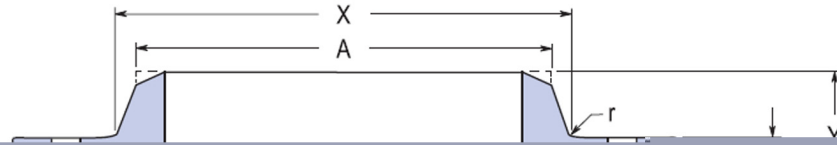


Class 600 - Large Diameter Flanges ASME B16.47 Series A or MSS SP-44



Pipe Size	Flange			Hub					Bolting		Weights		Blind	
	Thickness	Raised	Fillet	Face OD	Radius Min.	Δ Length	Bottom OD	Top OD	Bolt	Stud	Weld			
	C			R	r	Y	X	A						
class 600 LARGE DIAMETER FLANGES ASME B16.47 Series A or MSS SP-44														
26	40.00	4.25	4.94	29.50	0.50	8.75	29.44	26.00	28	2.00	36.00	1 7/8	940	1680
28	42.25	4.38	5.19	31.50	0.50	9.25	31.62	28.00	28	2.12	38.00	2	1060	1970
30	44.50	4.50	5.50	33.75	0.50	9.75	33.94	30.00	28	2.12	40.25	2	1210	1330
32	47.00	4.62	5.81	36.00	0.50	10.25	36.12	32.00	28	2.38	42.50	2 1/4	1375	2575
34	49.00	4.75	6.06	38.00	0.56	10.62	38.31	34.00	28	2.38	44.50	2 1/4	1540	3100
36	51.75	4.88	6.38	40.25	0.56	11.12	40.62	36.00	28	2.62	47.00	2 1/2	1705	3610
38	50.00	6.00	6.12	41.50	0.56	10.00	40.25	38.00	28	2.38	45.75	2 1/4	1470	3280
40	52.00	6.25	6.38	43.75	0.56	10.38	42.25	40.00	32	2.38	47.75	2 1/4	1630	3680
42	55.25	6.62	6.75	46.00	0.56	11.00	44.38	42.00	28	2.62	50.50	2 1/2	2030	4400
44	57.25	6.81	7.00	48.25	0.56	11.38	46.50	44.00	32	2.62	52.50	2 1/2	2160	4885
46	59.50	7.06	7.31	50.25	0.56	11.81	48.62	46.00	32	2.62	54.75	2 1/2	2410	5530
48	62.75	7.44	7.69	52.50	0.56	12.44	50.75	48.00	32	2.88	57.50	2 3/4	2855	6425
50	65.75	7.75	8.00	54.50	0.56	12.94	52.88	50.00	28	3.12	60.00	3	3330	7360
52	67.75	8.00	8.25	56.50	0.56	13.25	54.88	52.00	32	3.12	62.00	3	3560	8015
54	70.00	8.25	8.56	58.75	0.56	13.75	57.00	54.00	32	3.12	64.25	3	3920	8915
56	73.00	8.56	8.88	60.75	0.62	14.25	59.12	56.00	32	3.38	66.75	3 1/4	4280	10000
58	75.00	8.75	9.12	63.00	0.62	14.56	61.12	58.00	32	3.38	68.75	3 1/4	4640	10880
60	78.50	9.19	9.56	65.25	0.69	15.31	63.38	60.00	28	3.62	71.75	3 1/2	5000	12030

NOTE

Δ The 1/4" raised face is not included in Thickness C, Length Y.