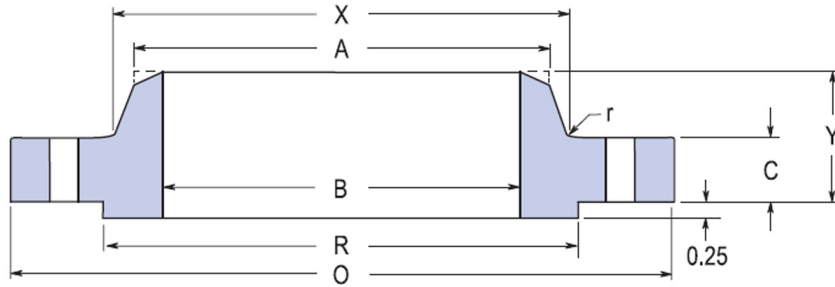
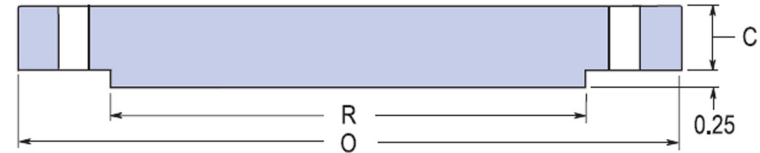


Class 900 - Large Diameter Flanges ASME B16.47 Series A or MSS SP-44



WELDING NECK



BLIND

Nominal Pipe Size	Flange								Bolting				Weights	
	OD	Thickness		Raised Face OD	Fillet Radius Min.	Hub			No. of Holes	Hole Size	Bolt Circle Dia.	Stud Bolt Diameter	Weld Neck Flange	Blind
		ΔWN Flg	Δ Blind			Δ Length	Bottom OD	Top OD						
O	C	C	R	r	Y	X	A							
class 900 LARGE DIAMETER FLANGES ASME B16.47 Series A or MSS SP-44														
26	42.75	5.50	6.31	29.50	0.44	11.25	30.50	26.00	20	2.88	37.50	2 3/4	1525	2400
28	46.00	5.62	6.75	31.50	0.50	11.75	32.75	28.00	20	3.12	40.25	3	1810	2945
30	48.50	5.88	7.18	33.75	0.50	12.25	35.00	30.00	20	3.12	42.75	3	2120	3500
32	51.75	6.25	7.62	36.00	0.50	13.00	37.25	32.00	20	3.38	45.50	3 1/4	2545	4230
34	55.00	6.50	8.06	38.00	0.56	13.75	39.62	34.00	20	3.62	48.25	3 1/2	2970	5030
36	57.50	6.75	8.44	40.00	0.56	14.00	41.00	36.00	20	3.62	50.75	3 1/2	3395	5800
42	61.50	8.12	9.12	47.75	0.81	14.62	46.31	42.00	24	3.62	54.75	3 1/2	3960	7110
44	64.88	8.44	9.56	50.00	0.88	15.38	48.62	44.00	24	3.88	57.62	3 3/4	4300	8265
46	68.25	8.88	10.06	52.50	0.88	16.18	50.87	46.00	24	4.12	60.75	4	4640	10345
48	70.25	9.19	10.38	54.50	0.94	16.50	52.88	48.00	24	4.12	62.50	4	4980	10600
50	--	--	--	--	--	--	--	--	--	--	--	--	--	--
52	--	--	--	--	--	--	--	--	--	--	--	--	--	--
54	--	--	--	--	--	--	--	--	--	--	--	--	--	--
56	--	--	--	--	--	--	--	--	--	--	--	--	--	--
58	--	--	--	--	--	--	--	--	--	--	--	--	--	--
60	--	--	--	--	--	--	--	--	--	--	--	--	--	--

NOTE

Δ The 1/4" raised face is not included in Thickness C, Length Y.