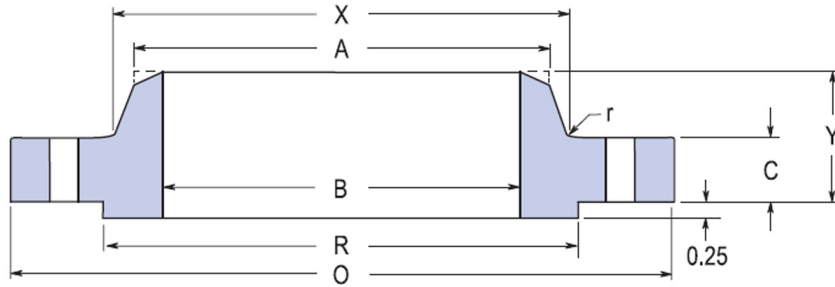
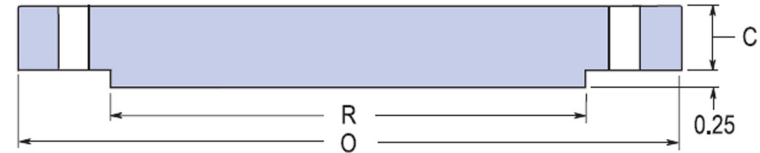


Class 900 - Large Diameter Flanges ASME B16.47 Series B or API 6*



WELDING NECK



BLIND

Nominal Pipe Size	Flange								Bolting				Weights	
	OD	Thickness		Raised Face OD	Fillet Radius Min.	Hub			No. of Holes	Hole Size	Bolt Circle Dia.	Stud Bolt Diameter	Weld Neck Flange	Blind
		Δ WN Flg	Δ Blind*			Δ Length	Bottom OD	Top OD						
	O	C	C	R	r	Y	X	A						
class 900 LARGE DIAMETER FLANGES ASME B16.47 Series B or API 605*														
26	40.25	5.31	6.06	30.00	0.44	10.19	29.25	26.00	20	2.62	35.50	2 1/2	1050	1996
28	43.50	5.81	6.56	32.25	0.50	10.88	31.38	28.00	20	2.88	38.25	2 3/4	1520	2580
30	46.50	6.12	6.93	34.50	0.50	11.38	33.50	30.00	20	3.12	40.75	3	1820	3095
32	48.75	6.31	7.31	36.50	0.50	11.94	35.75	32.00	20	3.12	43.00	3	2065	3583
34	51.75	6.75	7.68	39.00	0.56	12.56	37.88	34.00	20	3.38	45.50	3 1/4	2450	4210
36	53.00	6.81	7.94	40.50	0.56	12.81	40.00	36.00	24	3.12	47.25	3	2520	4550
38	57.50	7.50	8.50	43.25	0.75	13.88	42.25	38.00	20	3.62	50.75	3 1/2	3385	5825
40	59.50	7.75	8.81	45.75	0.81	14.31	44.38	40.00	24	3.62	52.75	3 1/2	3620	6390
42	61.50	8.12	9.12	47.75	0.81	14.62	46.31	42.00	24	3.62	54.75	3 1/2	3960	7110
44	64.88	8.44	9.56	50.00	0.88	15.38	48.62	44.00	24	3.88	57.62	3 1/4	4300	8265
46	68.25	8.88	10.06	52.50	0.88	16.18	50.88	46.00	24	4.12	60.50	4	4640	10345
48	70.25	9.19	10.38	54.50	0.94	16.50	52.88	48.00	24	4.12	62.50	4	4980	10600
50	--	--	--	--	--	--	--	--	--	--	--	--	--	--
52	--	--	--	--	--	--	--	--	--	--	--	--	--	--
54	--	--	--	--	--	--	--	--	--	--	--	--	--	--
56	--	--	--	--	--	--	--	--	--	--	--	--	--	--
58	--	--	--	--	--	--	--	--	--	--	--	--	--	--
60	--	--	--	--	--	--	--	--	--	--	--	--	--	--

Dimensions for Classes 600 & 900 NPS 38 & Larger Series B Flanges are the same as for the Series A Flanges.

* Blinds are not included in API 605.

Δ The 1/4" raised face is not included in Thickness C, Length Y.